



Redcliffe Bridge Club
PO Box 2179, REDCLIFFE NORTH QLD 4020
PH: 07 3883 4405
email: secretary@redcliffebridge.com.au

PIANOLA GUIDE by ... Wayne Parker

Some members have recently asked for more information about Pianola and as we have a lot of new members join the club, it is a good time to bring everyone up to date.

What is Pianola?

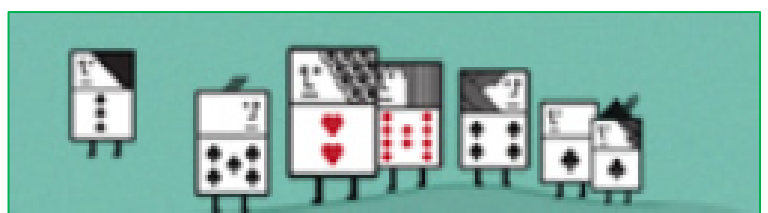
Pianola is a smart tool, developed in the United Kingdom, to give **bridge clubs** and **players** a new way of communicating with other members, and to help players analyse their game performance and find new partners.

All players would have received an invitation email to join Pianola and if you have not got one yet, please let Wayne Parker know and he will send you one. You can activate your account by clicking on the instructions **in your invitation email**. There are two types of account, and the club has subscribed all our members for the basic Pianola tool. Players can upgrade their account to Pianola Plus for a fee.

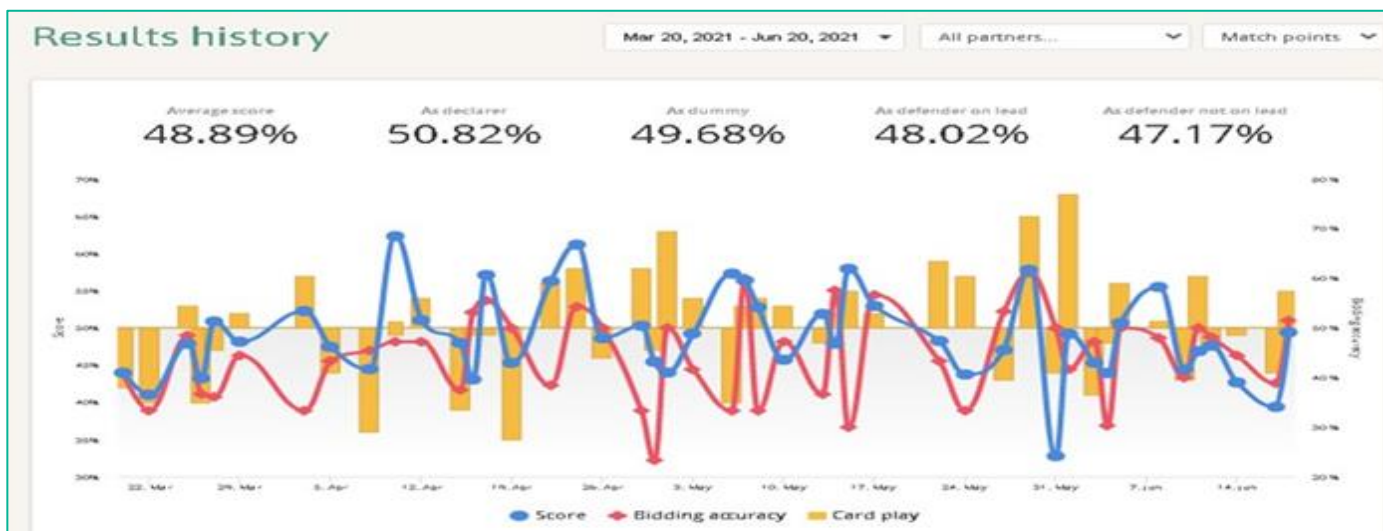
Login to Pianola using a computer, iPad, tablet or your mobile phone ... the best way is to go to our website at redcliffe.bridgeaustralia.org and click on the 'Results' tab, click on the 'Login to Pianola' green bar and you will then be presented with the Pianola dashboard..

The first thing you should do is to confirm or update your details on Pianola by clicking on the drop-down arrow on the far right of the dashboard and then select 'My Account'.

- **Personal Details** – no one else can see these details, and you can change your password here.
- **Bridge Details** – check the boxes to show what system of bridge conventions you play; these will be listed when you want to find a partner.
- **Photo** – you can upload a photo here if you wish.
- **Communication Preferences** – indicate if you wish to receive 'result emails' from the club and general emails.
- **Privacy** – show what information you wish to share. **NOTE:** This setting affects your ability to send partner requests.



Now that you have set-up your account, let's explore Pianola— on the green bar above, click **Results**, the results history page opens and obviously you must play a few games to see anything worthwhile here. You can see all your results together and your performance by role over time on this page.



Click the drop-down arrow next to **'All partners'** to see your performance with other players.

Looking at the above graph, look up your bidding accuracy by clicking on **Score and Card Play**, the trendlines will disappear - click on them again and they will come back. To get your card play results click on **Score and Bidding Accuracy** – I am sure that you get the idea.

The **Competitions** tab is not maintained in Pianola, instead you can check out the Calendar on our website.

The **Members** tab shows details that they have allowed to be viewed by all members.

The **Partner Finder** tab is particularly useful and **is used by a lot of members** in our club.

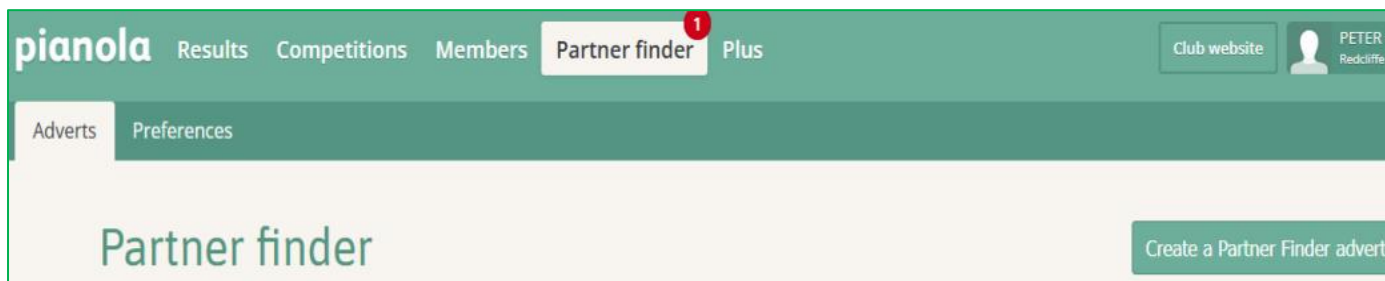
Pianola will notify you when people are looking for a partner; you can also hide your adverts from people you would prefer not to partner with. By default, all players are in the neutral column, but you can change this setting under the **Preferences** tab.

The screenshot shows the 'Partner finder notification preferences' page. The navigation bar includes 'Results', 'Competitions', 'Members', 'Partner finder', and 'Plus'. The 'Partner finder' tab is active. The page title is 'Partner finder notification preferences'. Below the title, there is a description: 'Pianola can notify you when people you're interested in are looking for a partner and also hide your adverts from people you'd prefer not to partner with. By default, all players are in the neutral column but you can change those settings here. Any changes you make are saved instantly.' Below this, there is a form with radio buttons for 'Notify', 'Neutral', and 'Block'. The 'Block' option is selected. There is an 'Update preference' button. Below the form, there is a search bar with the text 'Start typing to search members...'. At the bottom, there is a table with columns: First name, Last name, Rank, System, Notify, Neut..., and Bloc.

Each player has three default buttons next to their name, you can only select one button:

- **Notify** Players will receive your adverts, you will receive their adverts
- **Neutral** Players will receive your adverts, you will not receive their adverts
- **Block** this player will not receive your adverts, you will not receive their advert

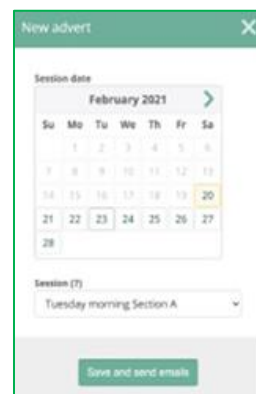
When you are happy with your settings, you can use the **Adverts** tab to send our an invitation ...



- Find the date and session for which you want a partner.
- Press “Save and send emails”.

An email will be sent to everyone in the Club unless you have blocked them in your preferences. Members will contact you after they see your email, (via email or phone) if they are free for that session and wish to play. Sometimes it only takes 10 minutes for someone to answer your request.

IMPORTANT: When you have found a partner that you **cancel** your “Partner Finder Request” in Pianola. You do this by clicking the cross in the top right-hand corner of your advertisement.



At the end of each game:

The club will email your results for the day, you can **unsubscribe** from getting this email if you want.

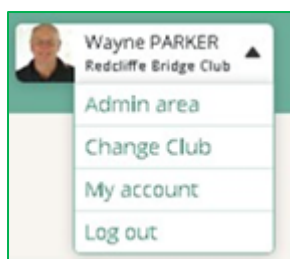
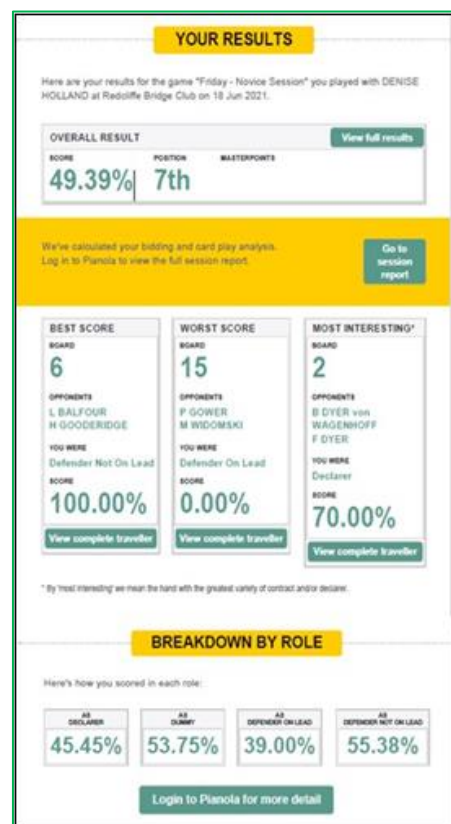
You can use the link to login to Pianola or login through the club website, you can check your **Ranking** for the session – click on your pair to view the results of all boards played. The bidding analysis, card replay, and card-by-card guidance is not available in the basic level of Pianola, you must subscribe to get this information.

On the **Travellers** link, you can see what players bid on every board, the tricks made and the lead card. The whole hand is also shown, including the makeable contracts by NS and EW.

The **Score Card** shows you the number of matchpoints you earned on each board, and it is also displayed as a percentage.

On this email, you can also go to the session report.

There is a wealth of information on this page, please go through the constructive explanation of your partnership performance at the session and go back over your bad boards to see if could have bid them better or played the cards better.



You can change your profile under ‘**My Account**’, this includes your personal details, your privacy settings and your ability to receive any general information from the club.

